

ISO 9001:2008
Certified



Ejector solutions for the marine and off-shore industry



www.primetechejectors.com

Email: sales@primetechejectors.com | Tel: +91-9840088220

About us

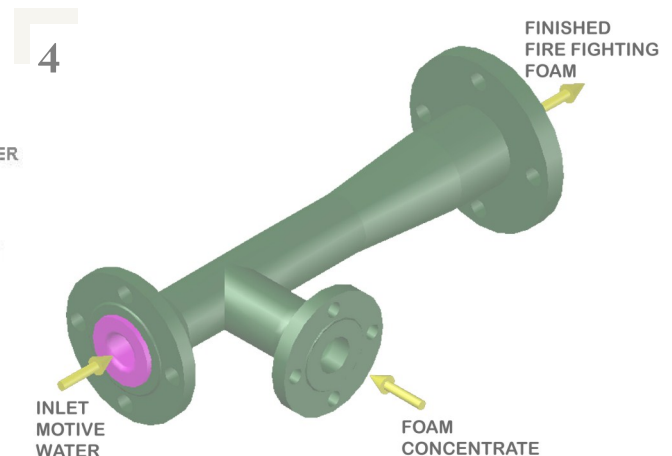
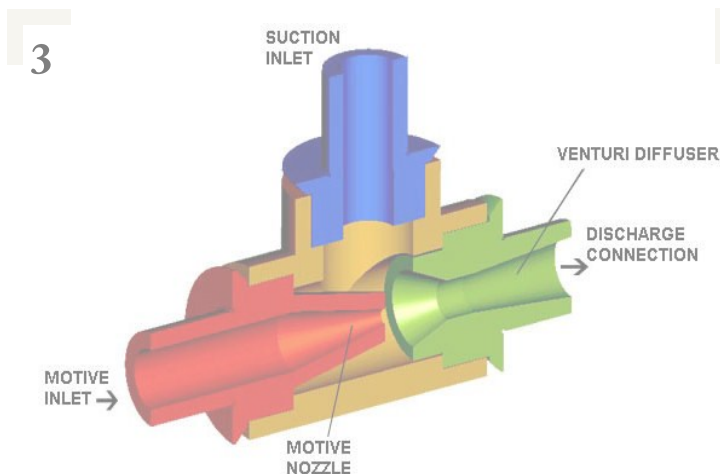
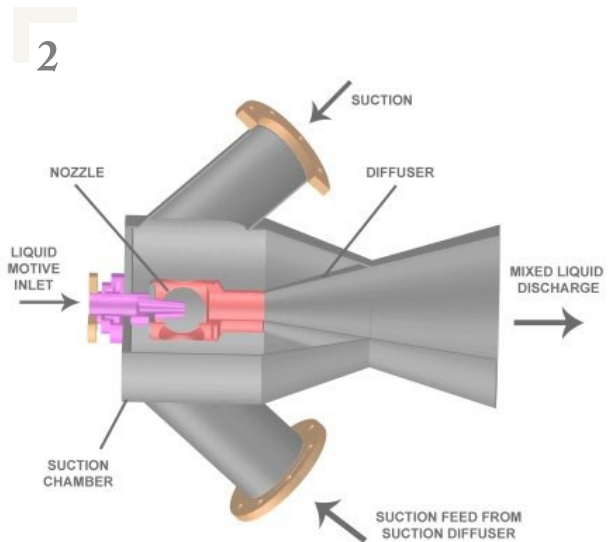
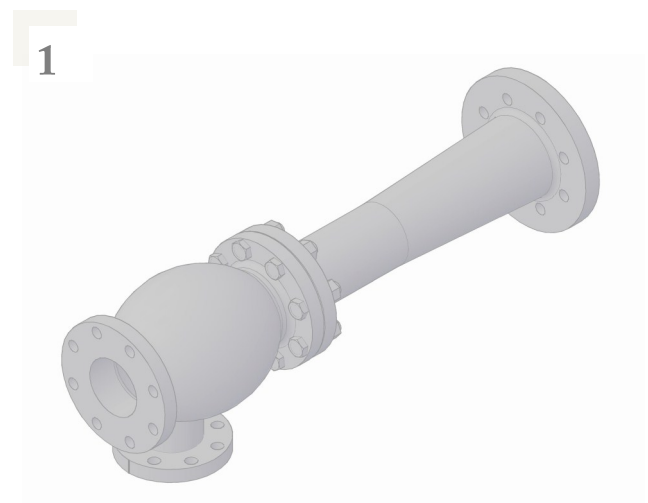
Primetech is an organization which stemmed out of the technological renaissance of India. Founded in 2005 by two ambitious technology entrepreneurs the company has quickly grown to become the leading Indian ejector manufacturer for the marine, oil and gas, pulp and paper, metal refining and chemical industry.

Primetech is an ISO 9001:2008, ISO 14001:2004 and CRISIL rated company headquartered in Chennai, India.

Our competitive edge lies in our adoption of the latest ejector design and construction methods, intense focus on quality, competitive pricing and the ability to foster repeat customers. Our ejectors are custom built for every client to suit the specific requirements of each application.

Primetech's qualities have resulted in a growing international customer base in countries like Australia, USA, Columbia, Brazil, Phillipines, Dubai, Kuwait, Malaysia to name a few.

Our marine range of ejectors are routinely inspected by Lloyd's register, ABS, Bureau Veritas, RENA and IRS.



1: Bilge stripping ejector

2: Saucony mixer

3: Air jet ejector

4: Firefighting foam ejector

Stripping ballast, bilge and cargo areas

E 200 Series

Ballast water is crucial for the stability of a ship in open sea. The ballast tank needs to be filled or emptied quickly during the cargo unloading and loading cycles of the ship. Ejectors are normally used for this purpose . The Primetech E200 series of stripping ejectors are specially custom made using the highest quality materials to suit your specific pumping requirements. The E 200 series ejectors are designed for a stationary mount, for the portable version see E 101 (next in catalogue).

We offer a warranty of up to 20 years on our ejectors .Our products are routinely certified by inspection agencies such as Lloyd's register, American bureau of shipping (ABS), Bureau veritas.

- ▶ No maintenance
- ▶ Custom designed as per customer requirements
- ▶ No moving parts
- ▶ Self-priming

Applications

- ▶ Ballast pump in / pump out
- ▶ Bilge pump in / pump out
- ▶ Engine room pump out
- ▶ Main and secondary drainage pumping
- ▶ Cargo oil pump out
- ▶ Spud can drain out

Material of construction E 200 Series	
Body	Bronze / Gun metal / SS 316 / Carbon steel
Nozzle	MONEL / SS 316
Fasteners	SS 316
Gaskets	Oil resistant rubber

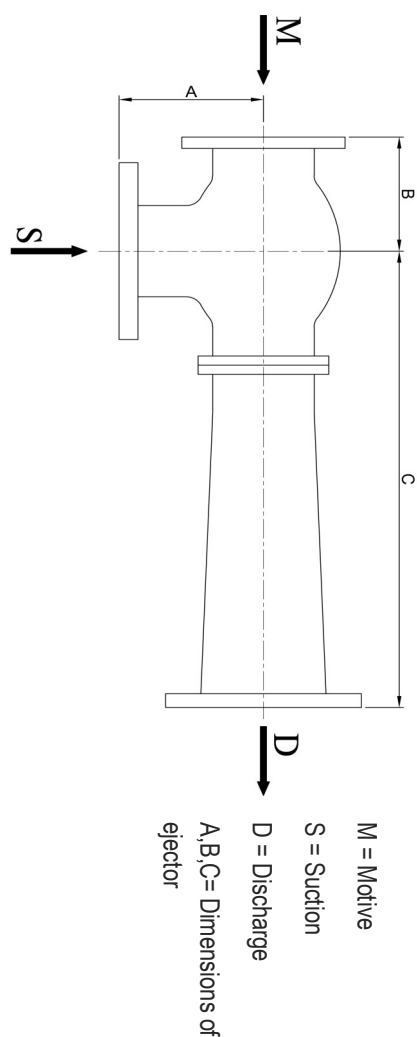


Fig 1. Primetech Bilge stripping ejector

Technical Data sheet

E 200 series stripping ejector

The datasheet contains details on standard models which were designed based on our most common enquiries. We are open for customized design to suit your specific capacity requirements.



MODEL	Capacity m ³ /hour	Inlet size	Suction size	Discharge size	Dimension B	Dimension C	Dimension A
E 202	A 50	65 NB	100 NB	100 NB	130 mm	470 mm	140 mm
	B 100	65 NB	100 NB	100 NB	130 mm	600 mm	140 mm
	C 150	65 NB	100 NB	100 NB	130 mm	725 mm	140 mm
E 204	A 165	100 NB	150 NB	150 NB	180 mm	750 mm	180 mm
	B 175	100 NB	150 NB	150 NB	180 mm	920 mm	180 mm
	C 200	100 NB	150 NB	150 NB	180 mm	1120 mm	180 mm
E 206	A 250	150 NB	200 NB	200 NB	180 mm	900 mm	200 mm
	B 350	150 NB	200 NB	200 NB	180 mm	1220 mm	200 mm
	C 640	150 NB	200 NB	200 NB	180 mm	1380 mm	200 mm
E 208	400	200 NB	200 NB	200 NB	200 mm	1590 mm	250 mm
E 2010	A 850	250 NB	250 NB	250 NB	230 mm	1850 mm	265 mm
	B 1140	250 NB	250 NB	250 NB	230 mm	2370 mm	265 mm
E 2012	1375	300 NB	350 NB	350 NB	250 mm	2400 mm	325 mm

Auxillary pumping with portable ejector

E 101

The portable ejector can be considered as an auxiliary pump which is always on stand-by for emergency and routine pumping in various locations within a shipping vessel. These ejectors are generally smaller in size and capacity than the E 200 series and can be carried to required locations manually.

We offer a warranty of up to 20 years on our product. Our ejectors are routinely certified by certification agencies such as Lloyd's register, American bureau of shipping (ABS), Bureau veritas.

- ▶ No maintenance
- ▶ Custom designed for each application
- ▶ No moving parts
- ▶ Can be moved to pumping locations every time

Applications

- ▶ Ballast pump in / pump out
- ▶ Bilge pump in / pump out
- ▶ Engine room pump out
- ▶ Cargo oil pump out
- ▶ Bulk carriers
- ▶ Chemical carriers

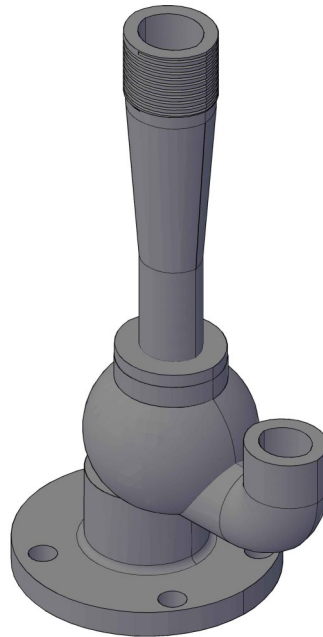


Fig 2. Rendering of Primetech portable ejector

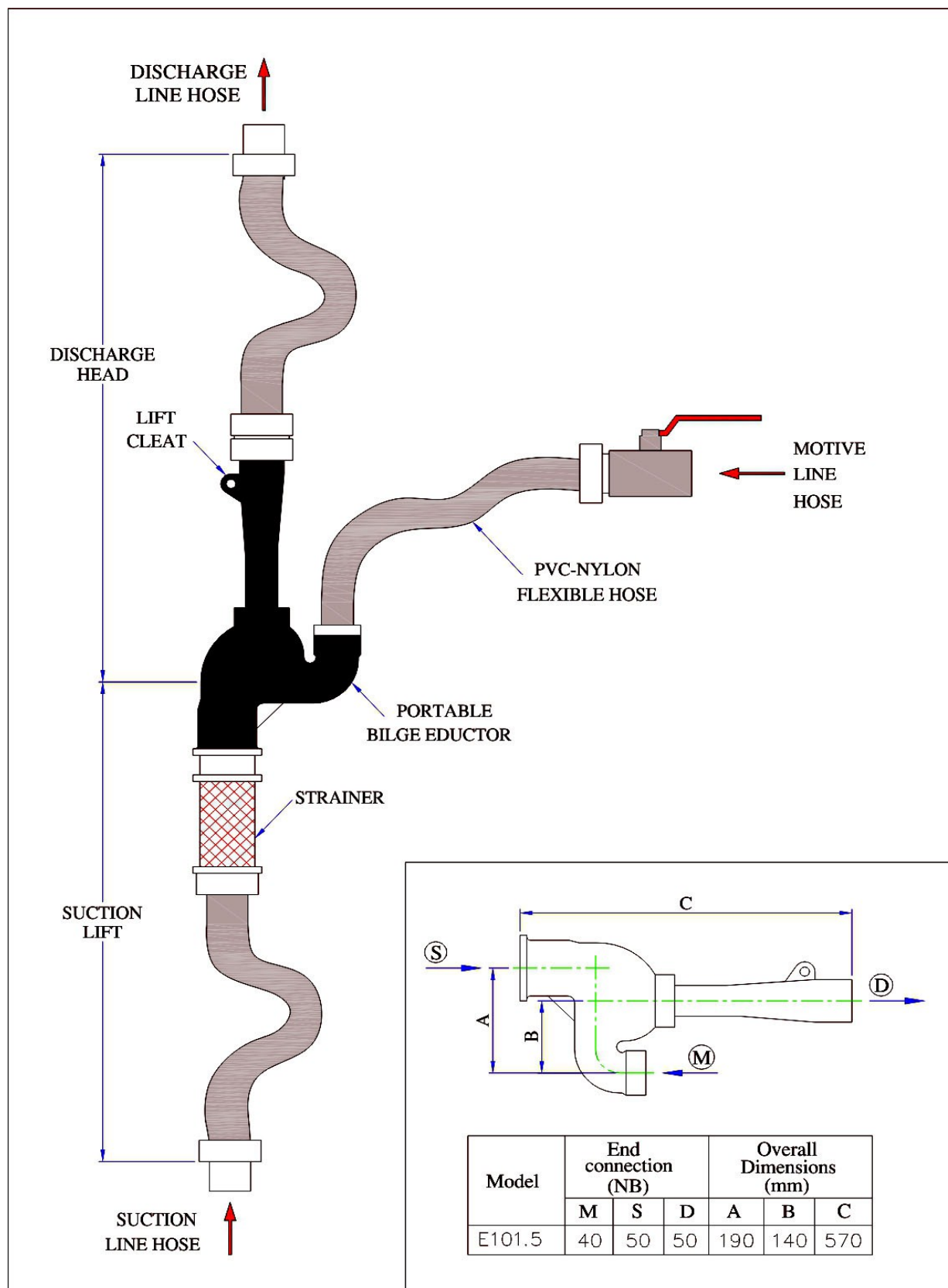
Working

- ▶ The ejector is manually lowered into the space to be pumped or can be operated at length with a suction hose so that suction hose is immersed into the fluid that is being pumped out.
- ▶ The passage of the motive fluid through the ejector produces the required vacuum to entrain the suction fluid and discharge it.
- ▶ An optional check valve can be provided to prevent back flow when motive flow line is closed. An optional ball valve can be provided for on-off control during operation.
- ▶ Oil resistant as per IS 10733, customer specific hose end connections supplied.

Technical data sheet

E 101 portable ejector

This datasheet contains details on standard model which were designed based on our most common enquiries. We are open for customized design to suit your specific capacity requirements.



Cleaning on-board cement tanks

E 300 mucking ejector

Mucking ejectors are water driven jet pumps which are used as vacuum cleaners for cleaning on-board cement tanks on platform supply vessels (PSV) or Anchor handling tug supply vessels (AHTS). Normally water from fire pumps or similar sources are used to drive the mucking ejector which cleans the cement tank during various points of the loading and unloading operation.

We offer a warranty of up to 20 years on our product. Our ejectors are routinely certified by certification agencies such as Lloyd's register, American bureau of shipping (ABS), Bureau veritas.

Applications

- ▶ Prior to cement loading– Cleaning up of intended storage area
- ▶ During loading– Dust evacuation
- ▶ After discharging– Cleaning and dust evacuation

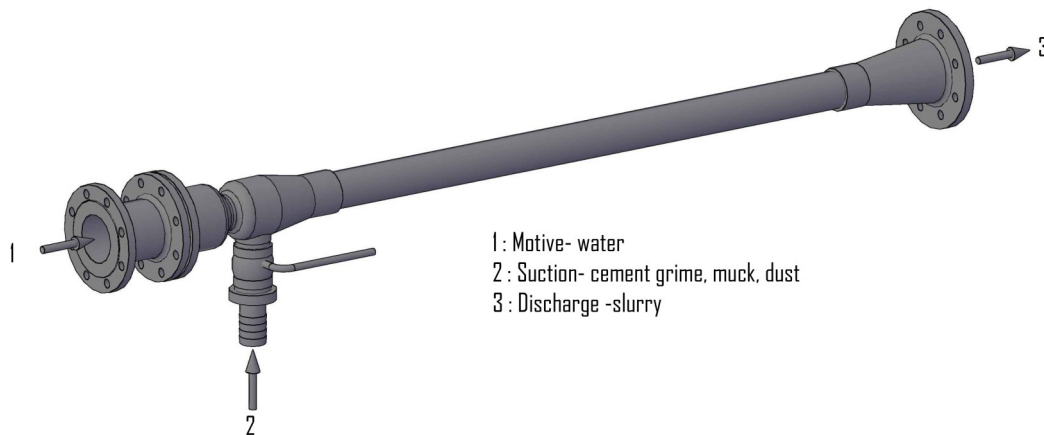


Fig 3 Rendering of the Primetech mucking ejector

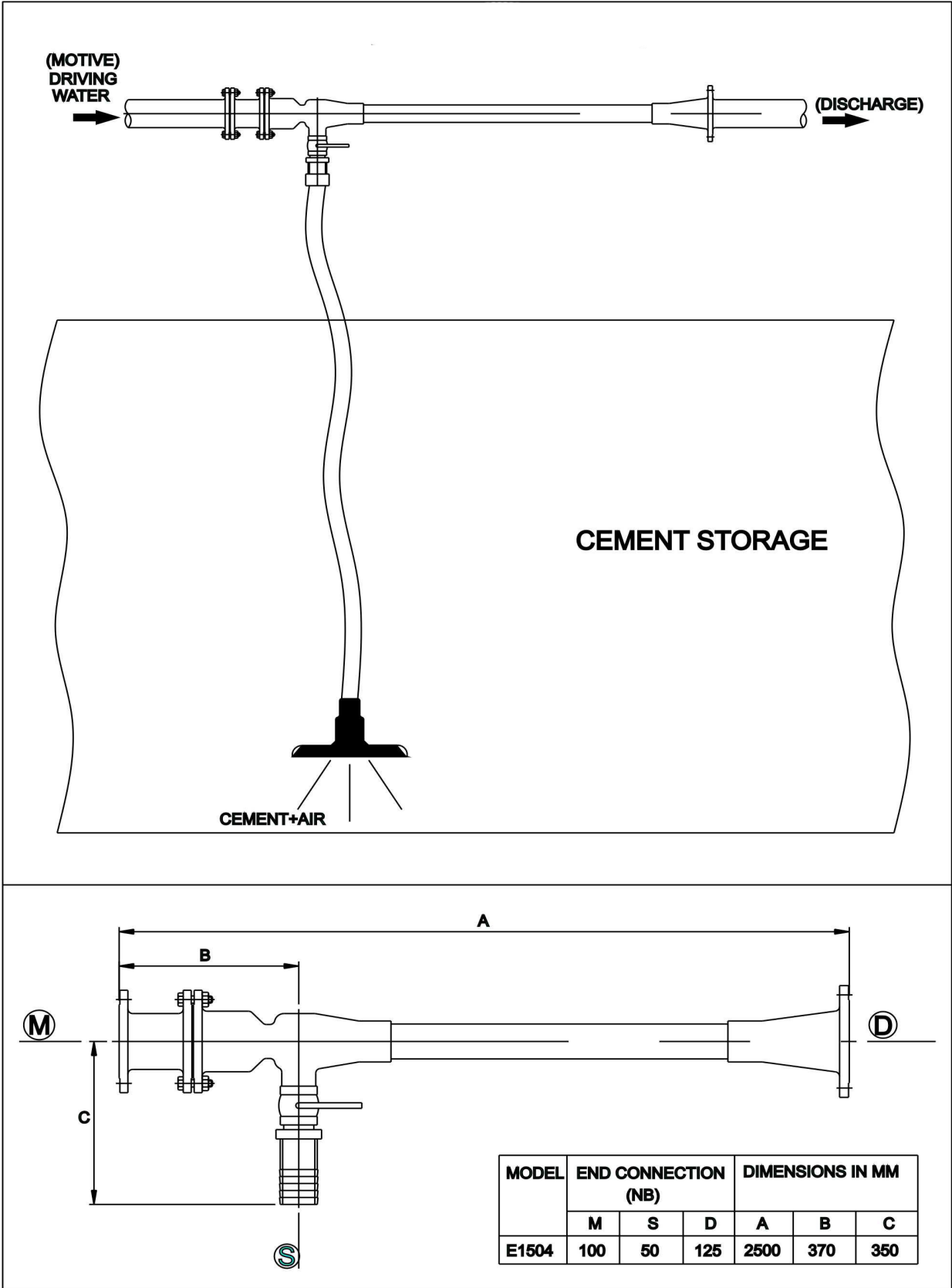
Working

- ▶ The ejector is manually lowered into the space to be cleaned or can be operated at length with a suction hose.
- ▶ Multi-nozzle opening is used to enhance the air-handling capacity of the ejector.
- ▶ Ball valve connected on the suction side to prevent back-flow of motive water.
- ▶ Strainer connected on the motive side to prevent entry of unwanted foreign particles.
- ▶ Corrosion resistant material of construction.

Technical data sheet

E 300 mucking ejector

This datasheet contains details on standard model which were designed based on our most common enquiries. We are open for customized design to suit your specific capacity requirements.



Spud can stripping in off-shore drilling platforms

E 1500 spud can ejector

Spud cans are the base cones on mobile drilling jack-up platforms. They are designed to spread the load across the base so that the rig does not sink deep into the sea bed. They provide stability to lateral forces on the jack-up rig when deployed onto ocean bed systems. Spud cans are normally filled with sea water to provide the requisite weight to the base structure. When the jack-up platform is to be moved to another , the spud cans are emptied by using ejectors.

Unlike conventional ejectors, the E-1500 Series Spud can ejectors are designed with “in-line suction and angular in-line motive” flow feature.

This design feature enables vertical upward installation of the ejector, thereby enabling direct suction from Spud can bottom and easy discharge in vertically upward line. This improves suction/ Evacuation efficiency and minimizes energy losses.

Material of construction E 1500 Spud can ejector	
Body	SS316 / Gun metal / Bronze / Carbon steel/cast iron
Nozzle	SS316 / Gun metal / Bronze / Carbon steel/cast iron
Fasteners	Steel GI or other MOC as per requirements
Gaskets	Oil resistant rubber

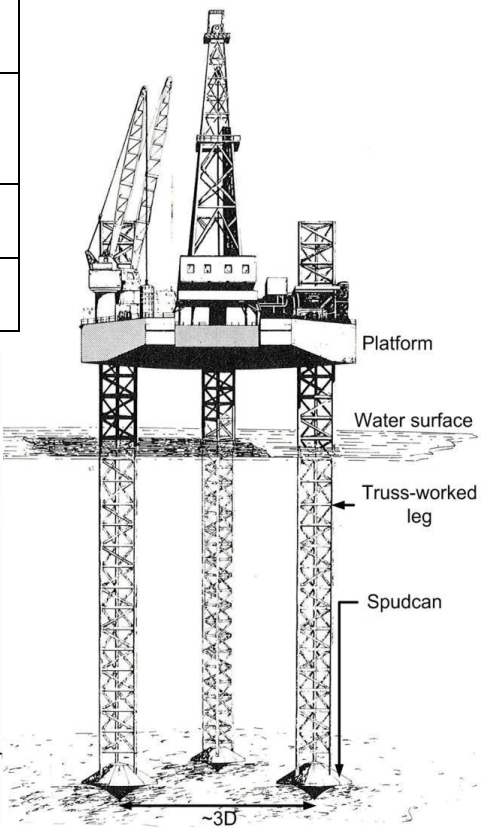
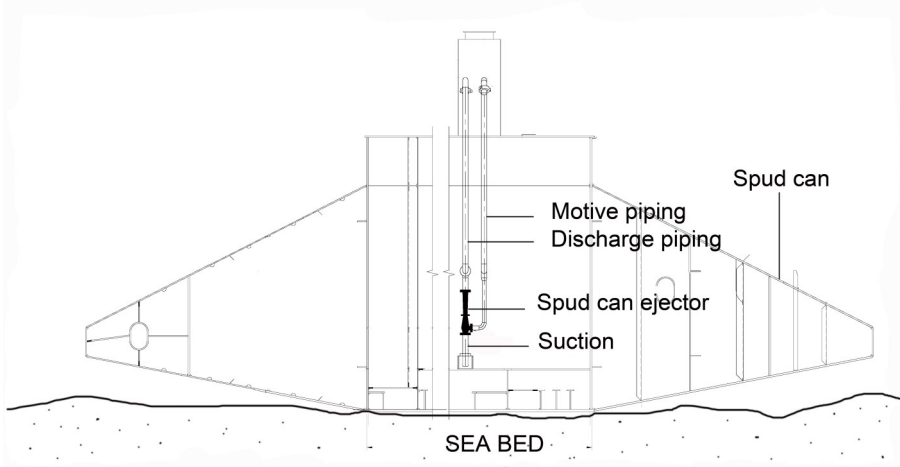
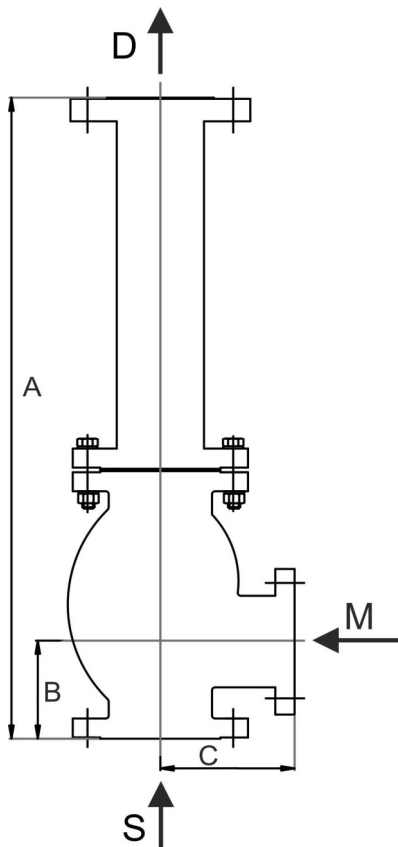


Fig 4. Left, Cross sectional diagram of a spud can installed with a Primetech E 1500 ejector, right mobile drilling platform with spud cans at the base

Technical data sheet

E 1500 spud can ejector

This datasheet contains details on standard models which were designed based on our most common enquiries. We are open for customized design to suit your specific capacity requirements.



Model	Capacity m3/hour	Inlet	Suction	Outlet	Dimension A	Dimension B	Dimension C
E 1503	100	80 NB	100 NB	150 NB	700 mm	130 mm	170 mm
E 1504	165	100 NB	150 NB	200 NB	930 mm	150 mm	200 mm
E 1506	250	150 NB	200 NB	250 NB	1080 mm	180 mm	230 mm
E 1508	400	200 NB	250 NB	300 NB	2650 mm	230 mm	280 mm



861-A, 13th Main road, Anna nagar west, Chennai 600040, India

Phone : +91-9840088220 Facsimile: +91-(0)44-26160458

For product enquiries contact us at : sales@primetechejectors.com

For general queries contact us at : marketing@primetechejectors.com